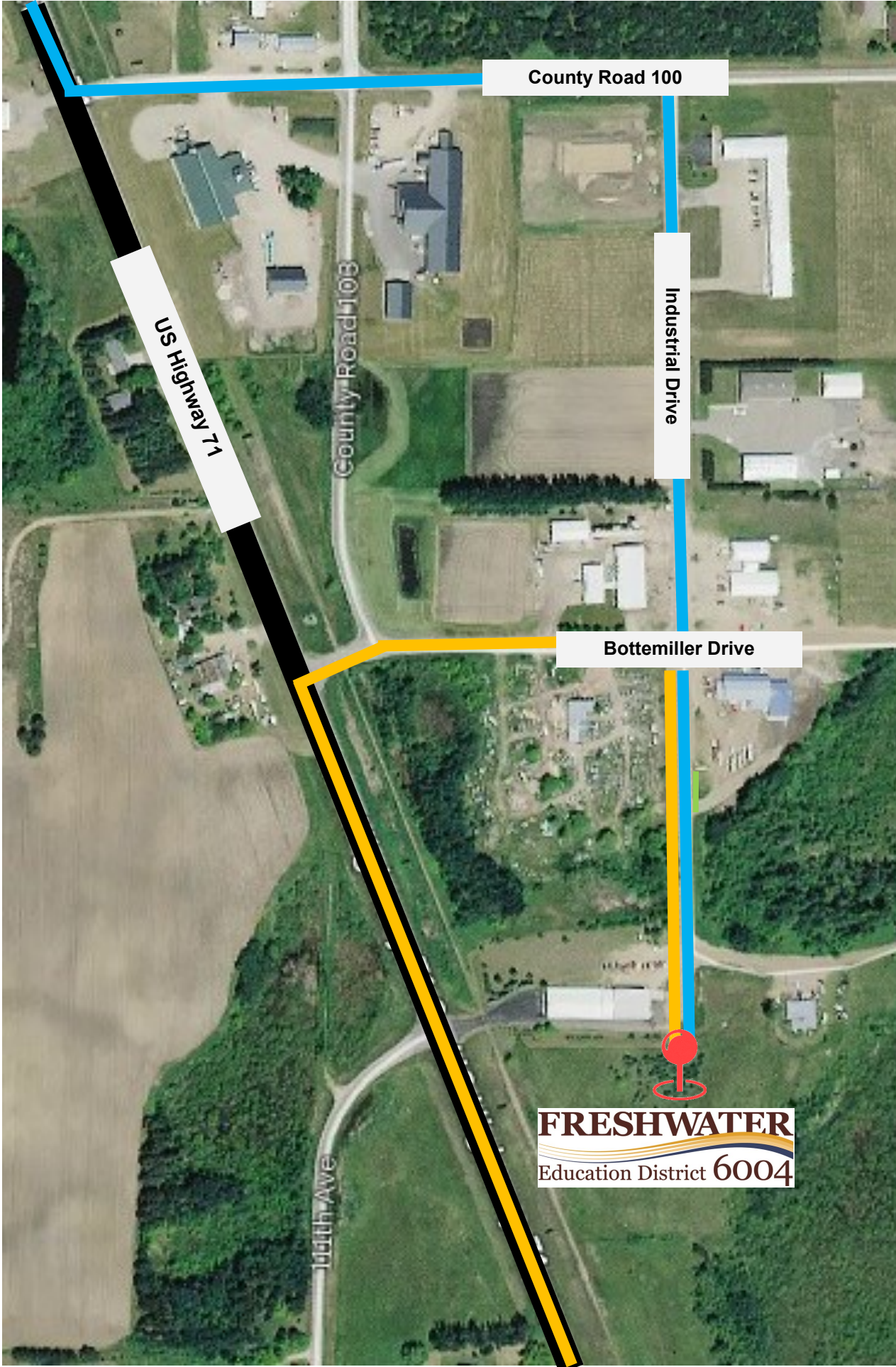


DIRECTIONS TO FRESHWATER BUILDING SITE

2222 Industrial Drive, Wadena



If traveling South on HWY 71

- Turn LEFT on County Road 100
- Turn RIGHT on Industrial Drive
- Follow Industrial Drive until you see Freshwater sign

If traveling North on HWY 71

- Turn RIGHT on Bottemiller Dr
- Turn RIGHT on Industrial Drive
- Follow Industrial Drive until you see Freshwater sign